

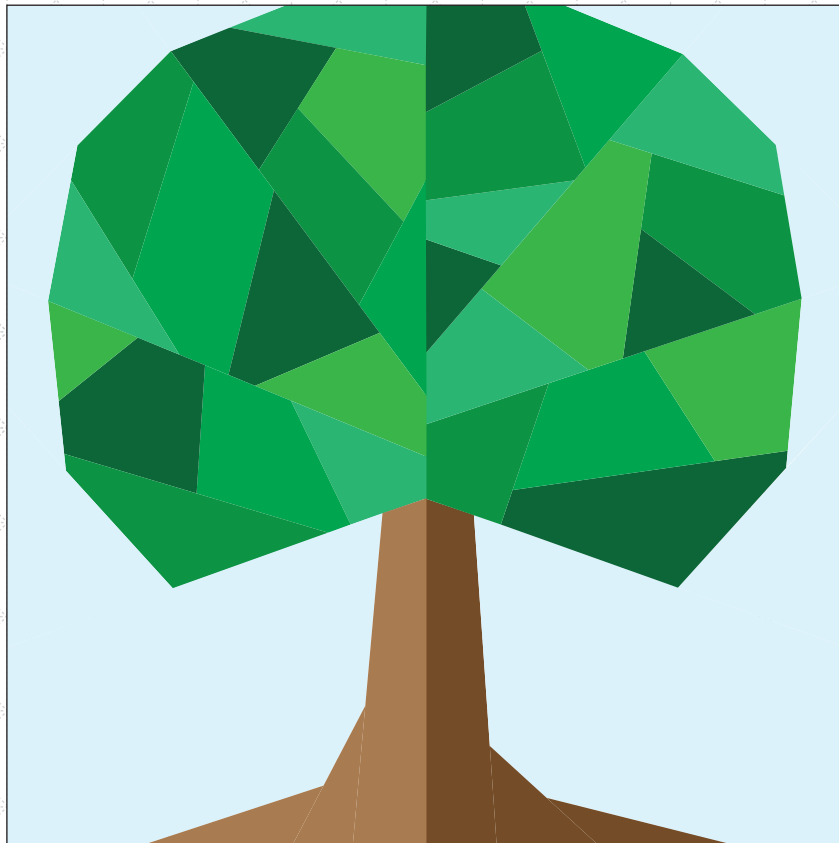
FOUNDATION  
PAPER-PIECING



HUNTER'S  
DESIGN STUDIO

# Back to Nature TREE

*a foundation paper-pieced block*



## FPP Back to Nature Tree

This pattern includes foundation paper-pieced sections for two variations of a tree block. The finished block is 6" x 6" finished (6 1/2" x 6 1/2" with seam allowances)

This pattern assumes you know how to foundation paper-piece, and how to sew more fabric to the top, bottom and sides to set the block as needed.

For instructions and tips on foundation paper-piecing, please head to this tutorial on the Hunter's Design Studio YouTube Channel: <https://youtu.be/a--oClbeklY>

### Print only the pages you need:

- Be sure to print at 100%/DO NOT SCALE, and check the scale measurement box on the pattern to make sure your print is correctly sized
- You are also welcome to reduce or enlarge any pattern to fit your needs
- I recommend printing on Foundation Paper-Piecing Newsprint as it tears off like a dream, especially in the tiny sections

### Fabric Requirements:

- 10" x 10" square (or equivalent area) of Background Fabric
- Two 5" x 5" squares (or equivalent scraps) of Trunk Fabric
- Scraps for leaves (recommend minimum of five fabrics)

Fabric recommendations: solids, blenders, batiks.

### The Tree Block is made of 8 sections (or 4 sections if you choose the simpler Bonus Variation):

- Choose which tree to make - the Bonus Variation is at the end of the pattern
- Separate the pattern pieces, leaving at least a 1/2" of space around each block
- See the following pages for color suggestions and a Color Planning Sheet
- Choose your fabrics!
- Foundation paper piece each section, and trim them, leaving a 1/4" seam allowance. Give them a good press
- Sew the sections together - use a pin to align the corners of the sections. Peel the paper out of the seams and press them open to reduce the bulk
- Once the block assembly is complete, peel the paper off and press once more for good measure :-)

### Setting Suggestions:

- Add sashing of 1" or more between multiple blocks

Enjoy!

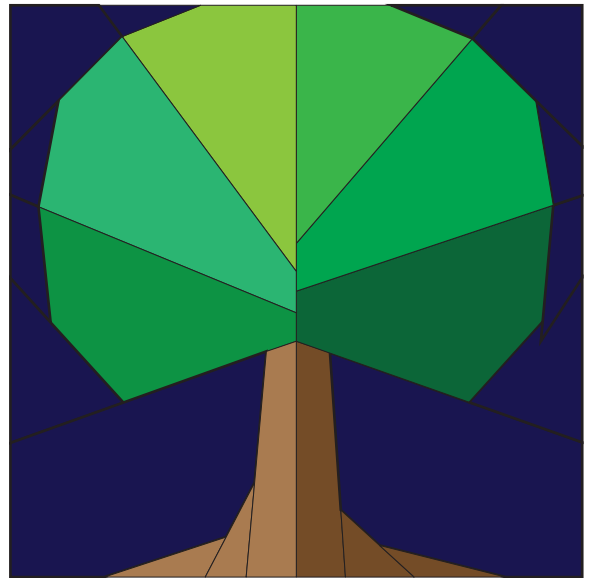
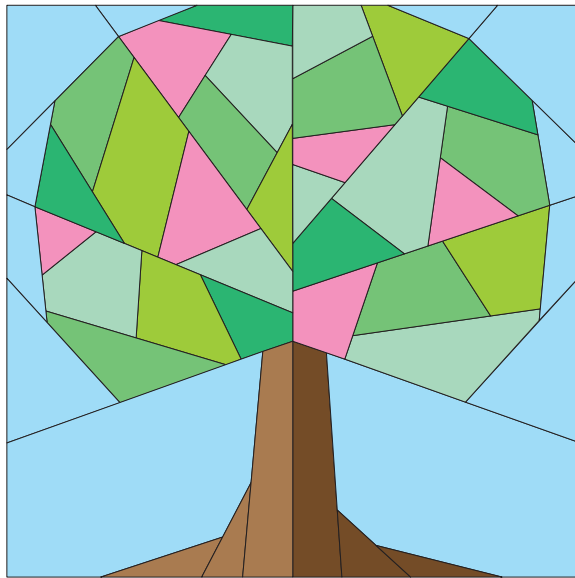
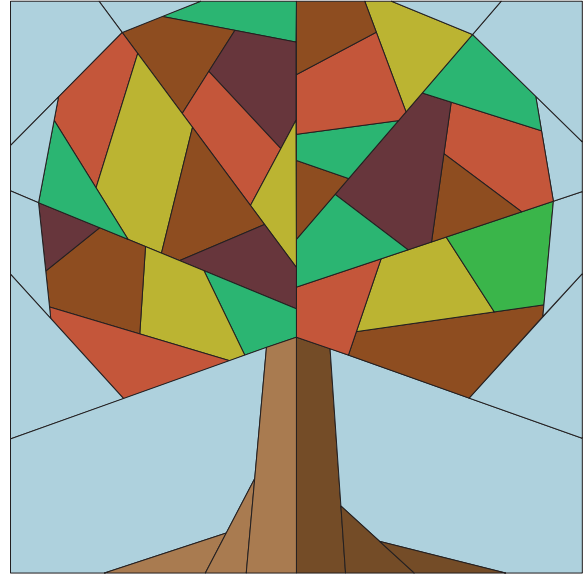
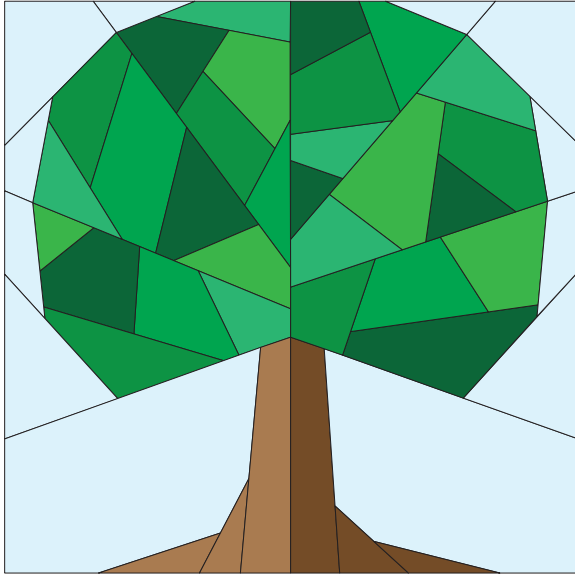
Please post your block on Instagram, and tag it with **#FPPBackToNatureTree** and **#HuntersDesignStudio**



No part of this pattern may be reproduced in any form without written consent or unless otherwise stated, **which means copying it to distribute to others is illegal, not to mention bad karma.**

Please support pattern designers so we can make more cool things for you! Personal use ONLY.

# Color Suggestions



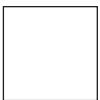
Bonus Variation!

# Color Planning Sheet

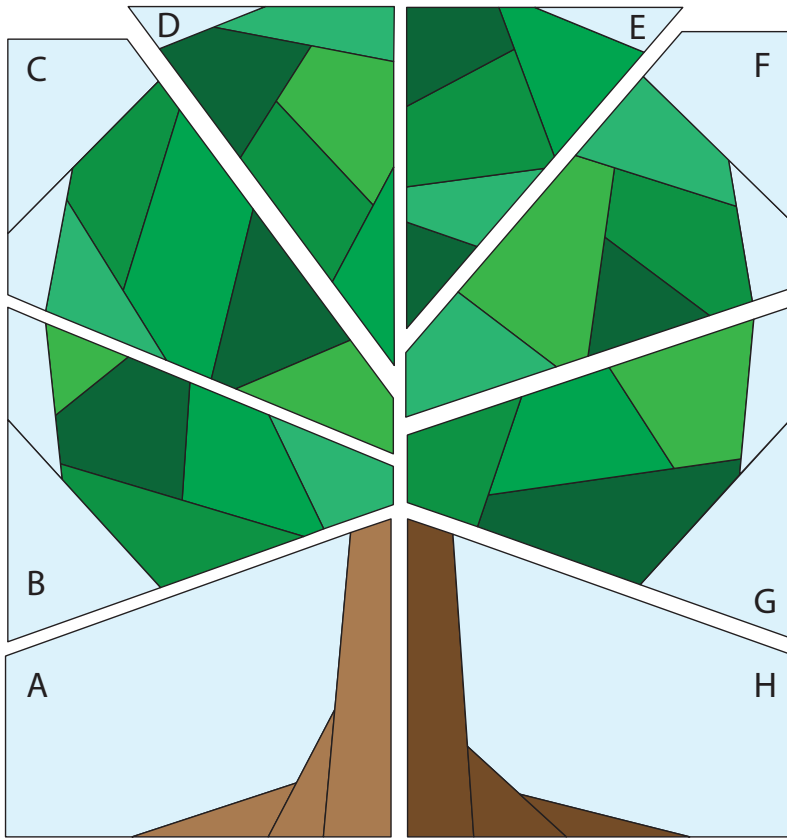


Background

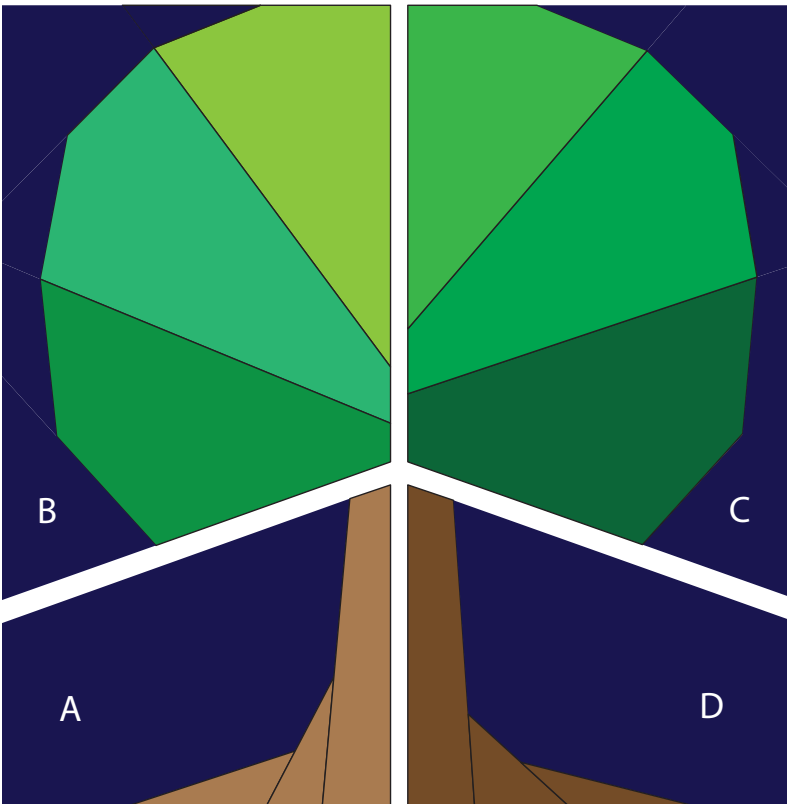
Suggest: 2 colors for the trunk and a minimum of 5 for the leaves



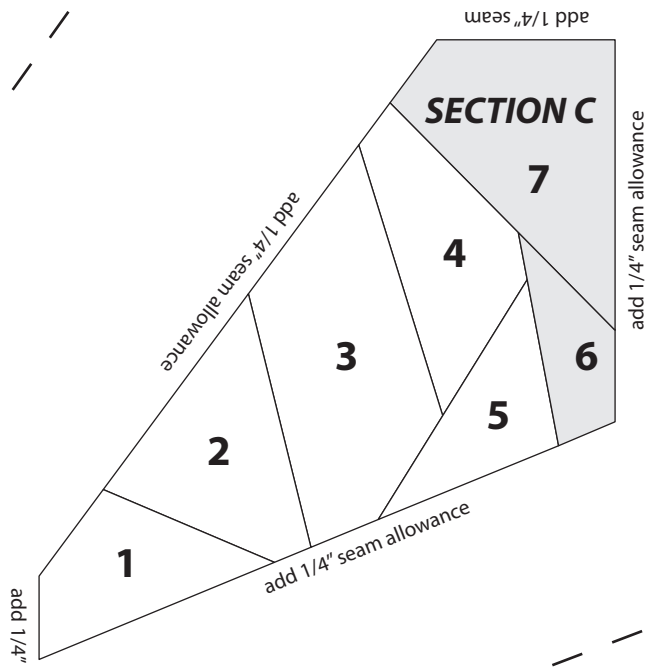
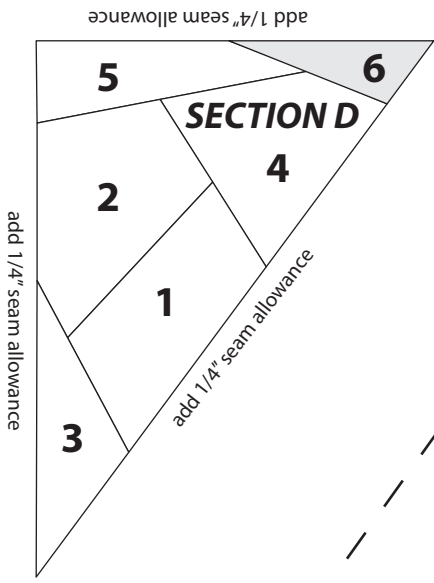
# Block Assembly



Sew A+B+C+D  
Sew E+F+G+H  
Sew ABCD + EFGH

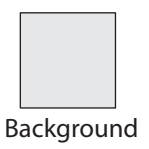
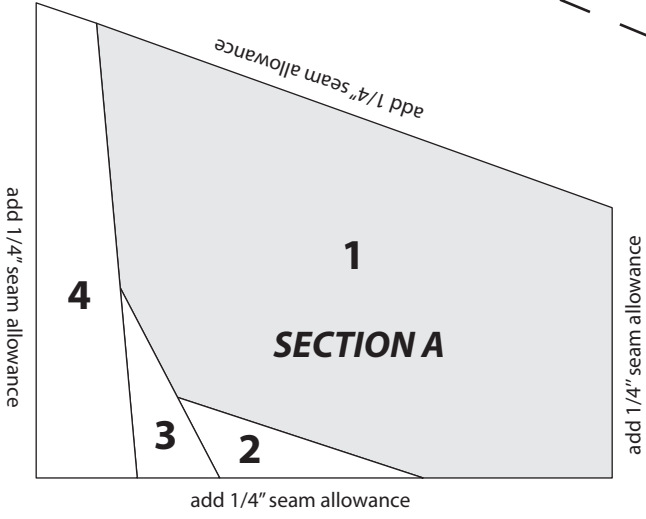
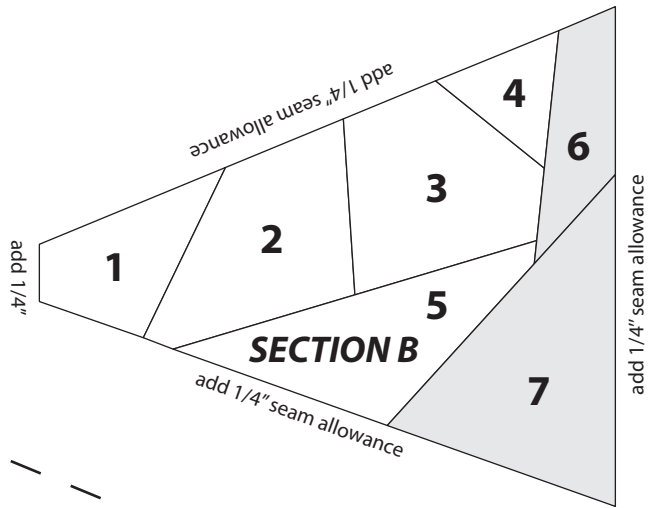


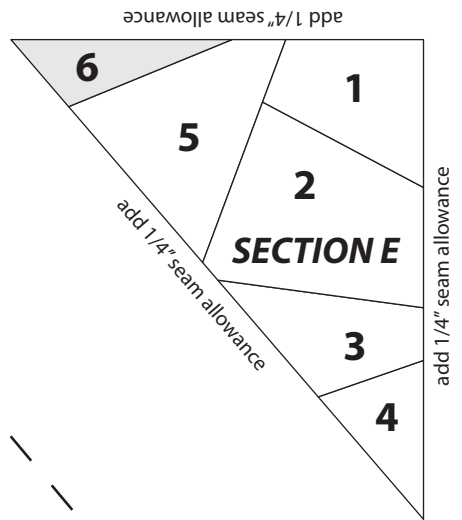
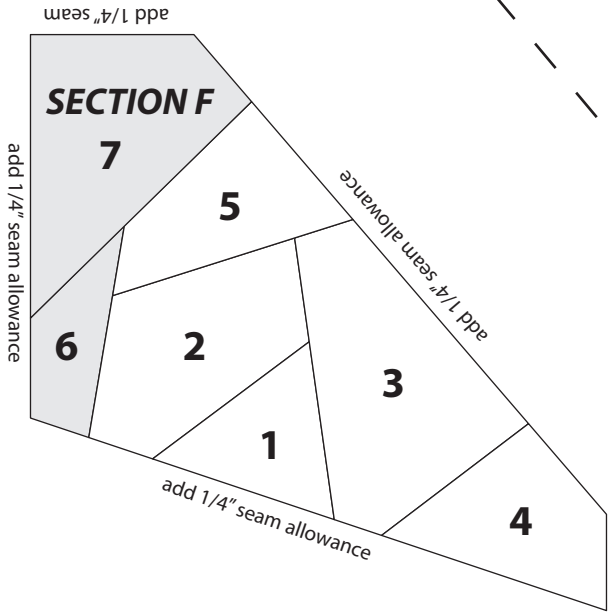
Sew A+B  
Sew C+D  
Sew AB +CD



Printer check!  
These lines  
should be  
1" long

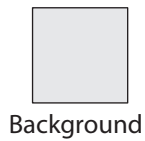
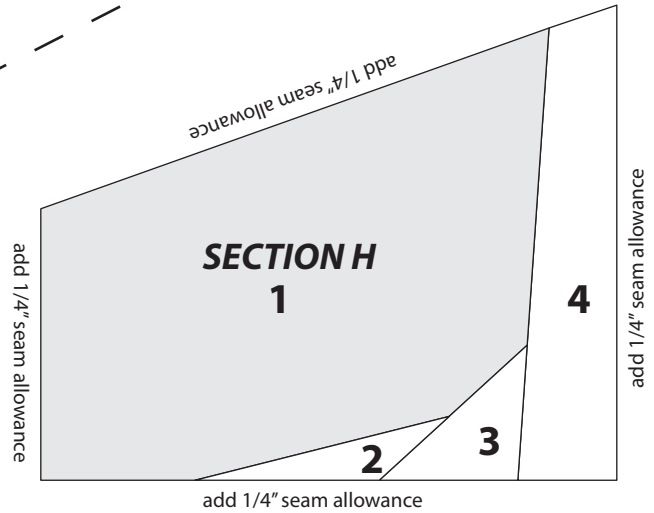
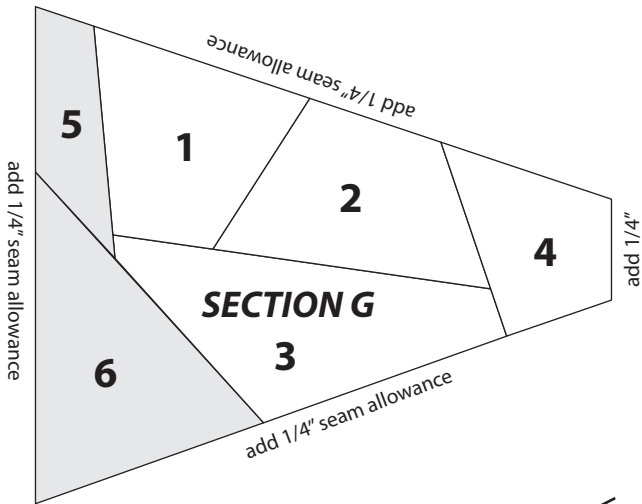
When printing,  
use the "Print  
Actual Size"  
setting (uncheck  
"Print to Fit")



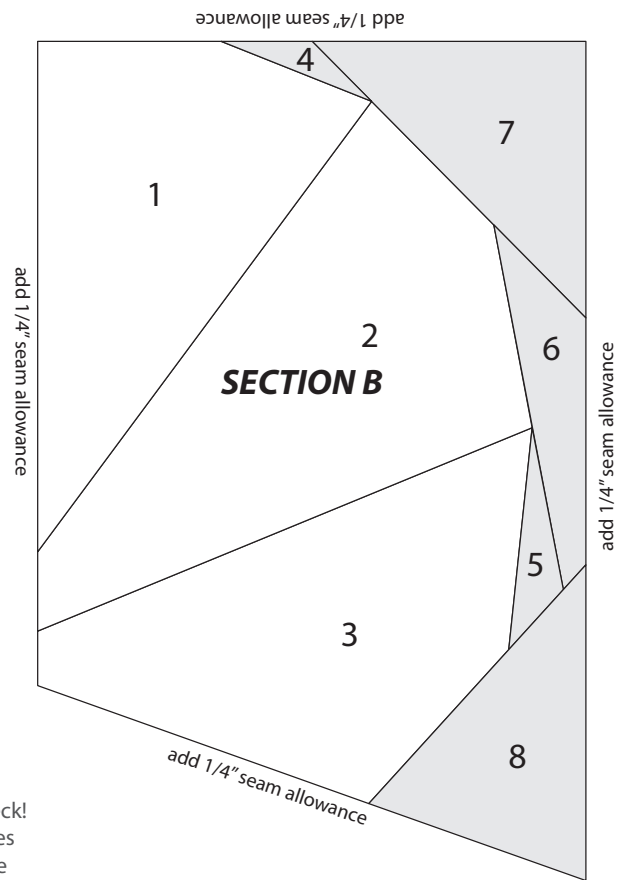
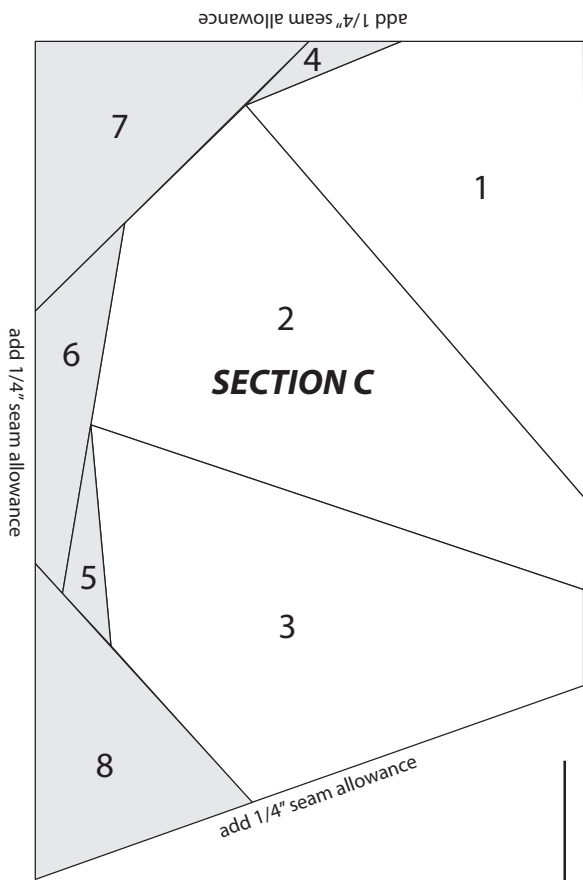


Printer check!  
These lines  
should be  
1" long

When printing,  
use the "Print  
Actual Size"  
setting (uncheck  
"Print to Fit")



# BONUS VARIATION



Printer check!  
These lines  
should be  
1" long

When printing,  
use the "Print  
Actual Size"  
setting (uncheck  
"Print to Fit")

